



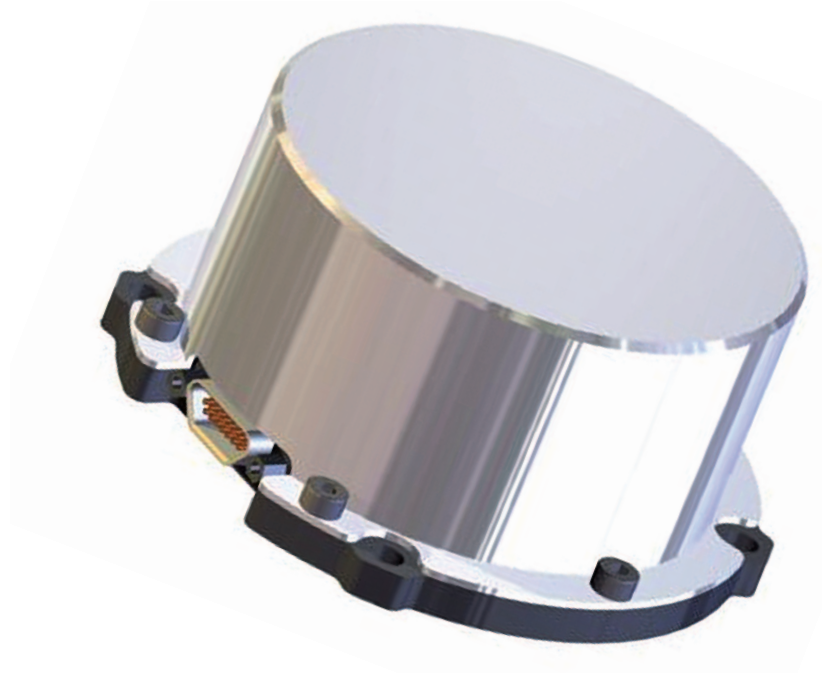
**Astro-  
und Feinwerktechnik  
Adlershof GmbH**

Albert-Einstein-Str.12  
D-12489 Berlin

**Phone: +49- 30- 6392 1000**  
Fax: +49- 30- 6392 1002  
Internet: [www.astrofein.com](http://www.astrofein.com)

## **Space Technology**

Reaction Wheels



### **RW 35 Reaction Wheel for Nano and Micro Satellites**

The RW 35 is a highly integrated reaction wheel with following features:

- Wheel-drive circuitry self contained
- Separate operating modes control speed and accelerationn
- Extensive housekeeping data (e.g. speed, voltage, current, temperature)
- Protective mechanisms (e.g. temperature monitoring, protective circuits)
- High-level alignment and balancing and mechanical design minimize vibration

**Parameters****Data****Electrical**

Voltage	18 V to 34 V
Power (steady state / maximum)	1 W / 5 W

**Mechanical**

Angular Momentum	0,1 Nms
Acceleration, maximum	5 mNm
Speed, maximum	5000 rpm
Mass	500 g

**Additional Parameters**

Temperature Range	- 20 °C to + 50 °C
Design Service Life	2 years
Storage Time	2 years (incl. 240 hours ground operation)
Radiation (total dose)	20 kRad

Proprietary. All rights reserved.  
Preliminary data sheet, subject to change without notice.